



Altitude¹⁶

SIXTEEN CHANNELS OF HEAVEN_





ALTITUDE¹⁶

Following in the tradition of the groundbreaking Altitude³² processor, the Altitude¹⁶ brings Trinnov's award-winning Speaker/Room Optimizer technology, immersive audio capabilities, active crossovers and unmatched bass management flexibility to a new, slightly smaller form factor with tremendous value. ■

The gateway
to genuine,
immersive cinema
at home

THE FUTURE OF IMMERSIVE AUDIO

AURO 3D[®]
AUDIO

dts

DOLBY ATMOS[®]

The Altitude16 simply can do many wonderful things that no other processor can do because we do not depend on the capabilities of a mass-market DSP chip. We control the signal path from beginning to end.

While other companies were waiting for someone else to design a chip that would enable them to add these advanced capabilities. The Altitude software-based design, combined with Trinnov's advanced understanding of 3D audio, has provided critical capabilities needed for a seamless, immersive audio experience that no other manufacturer has yet been able to deliver to the market.

The Altitude16 can render up to 16 discrete channels of information and comes equipped with Dolby Atmos, Auro-3D, and DTS:X immersive audio decoders, it supports up to 16 outputs and natively processes high-resolution 24/96 audio, offering four-way active crossovers and no limitation in terms of subwoofer outputs.



TRINNOV'S UNIQUE TECHNOLOGIES

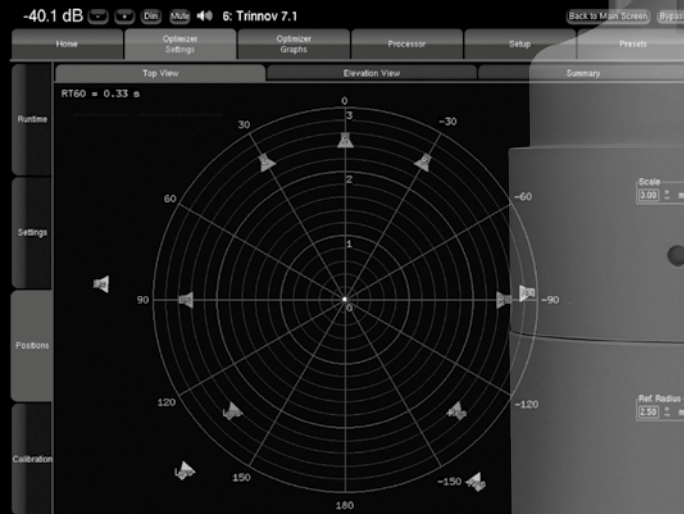
SOUND OVER MATTER_

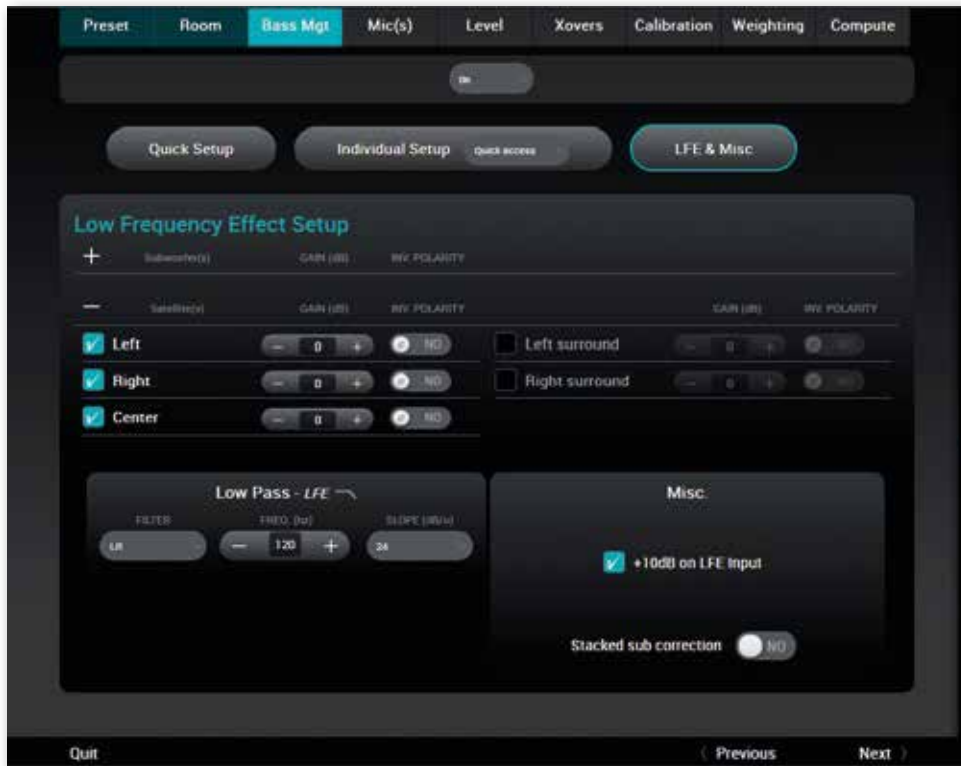
The optimizer loudspeaker/room optimization technology is at the heart of Trinnov's products for professional studios, movie theaters, high-end hi-fi and home theaters. With its modern approach to acoustic measurements, analysis, and processing, it solves the loudspeaker/room acoustic equation and goes so far beyond the more common "auto-EQ" technologies available from third parties.

SPATIAL ACCURACY

REMAPPING_

Thanks to the 3D measurement capabilities of our microphone, each speaker's actual placement can precisely be localized in the room regarding distance, azimuth, and elevation. Knowing the intended placement of various sounds within the soundtrack (since we decoded it), we can then "remap" the sound objects from the theory of the soundtrack to the reality of your particular room, using the closest two or three speakers to create a phantom image of the sound where it should be. While 2D remapping deals mainly with the horizontal plane, 3D remapping will manage both azimuths and elevations.





LOW END UNDER CONTROL

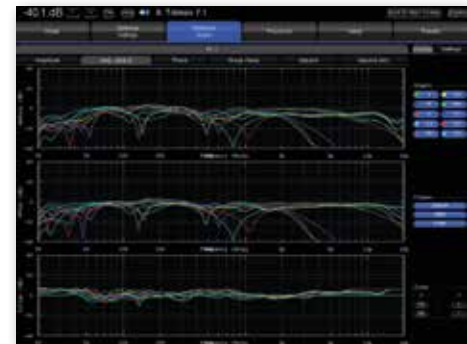
BASS MANAGEMENT_

Trinnov provides the most sophisticated solution on the market when it comes to managing low frequencies. With our intermediate bass management system you can, of course, specify how one or more subwoofers will reproduce the lower part of the spectrum for each channel. But it goes further: it even allows you to bass manage the low frequencies of a small speaker to the closest, more-capable speaker. It gives you complete control over crossover frequencies, filter type, slope, and even where the redirected bass will be reproduced.

TRINNOV'S UNIQUE

OPTIMIZER_

The Optimizer is the only acoustic optimization technology that has been recognized by world-class sound engineers, movie theaters, and audiophiles. Other technologies paint with a broad brush, failing to recognize that there are actually many different problems that must be addressed with different, optimal solutions. The Optimizer analyzes and corrects these different sonic challenges individually, with precision. The result is a seamless three-dimensional soundstage unlike any other.



TRINNOV'S UNIQUE EXPERTISE

IN HOME CINEMA INSTALLATION_

Trinnov has been collaborating for years with some of the most respected brands and integrators in the field, allowing us to work on some of the most ambitious home cinema projects of the past ten years. With the publication of our own recommended speaker positions guide, we are offering our expertise to all integrators on top of our recurrent CEDIA Lectures.

THE CINEMA DESIGNER_



TCD is an online design tool that allows users to create technically impeccable cinema designs, support documents, and aesthetic renders, within minutes.

TCD software supports the complete line of our High-End products, letting you integrate the Altitude in the most complex speaker layouts in a matter of minutes.



“

It's the most powerful multichannel processor and the one that gives us the most flexibility, coupled with the highest quality sound. From a sound engineering point of view, it offers facilities that no other processor yet encountered does.

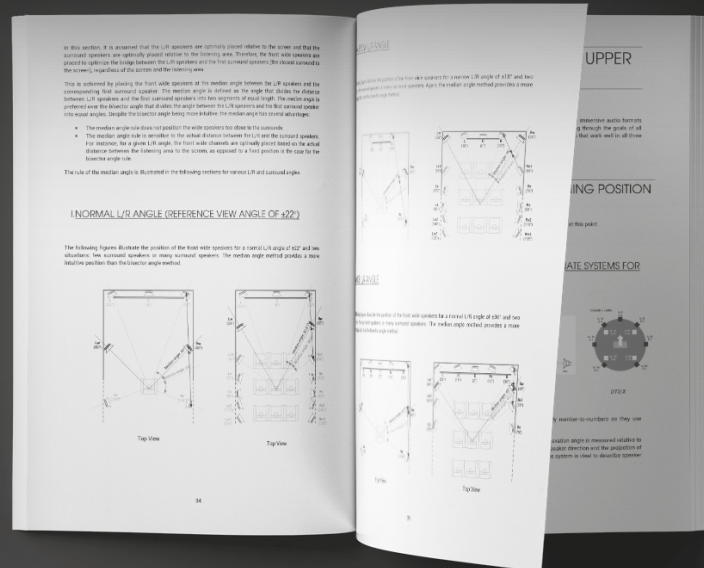
Simon Honywill (Pyramid Group)



SPEAKER LAYOUTS_

With its sixteen discrete outputs, the Altitude¹⁶ is the only platform in its price range to offer such variety of speaker layouts. By decoding all immersive codecs natively over 16 discrete channels we guarantee the most accurate sound reproduction and all up to 96k.

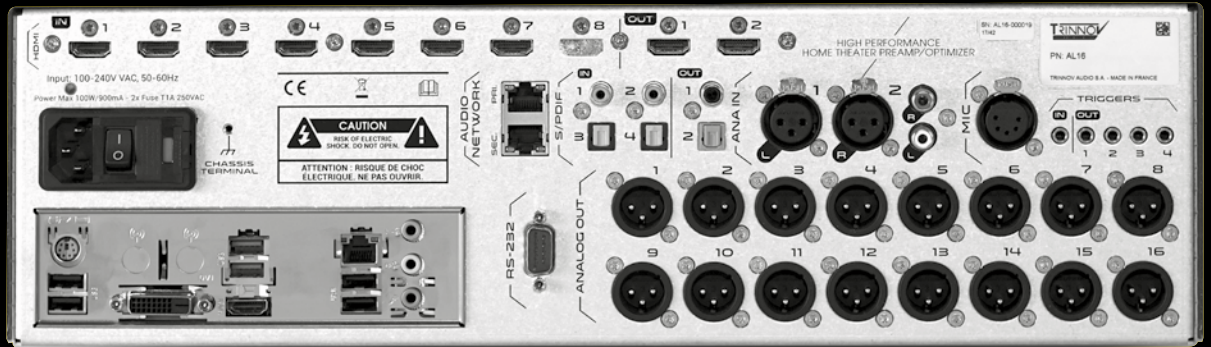
Additionally, Trinnov Audio dealers now have access to a comprehensive speaker placement recommendations design guide which details all combinations possible.



UNLEASH HDMI_

The HDMI interface is in a state of constant evolution, creating many ongoing challenges for manufacturers and Integrators by continually disrupting the A/V ecosystem with difficult-to-resolve compatibility issues. Thanks to Trinnov's proprietary software platform, the Altitude16 provides unique diagnostic information that not only lets you monitor and analyze all HDMI streams but also offers the ability to identify and address HDMI 2.0 / HDCP 2.2 compatibility issues.





ALTITUDE¹⁶ SPECIFICATIONS

16 CHANNEL APPLICATIONS

- Discrete 9.1.6 immersive sound
- Discrete 7.3.6 or 9.3.4 immersive sound
- 7.2.4 with screen bi-amp
- 5.1.4 with screen tri-amp
- 7.2 full bi-amp and a lot more

STEP BY STEP WIZARD

The Altitude16 comes with an evolution of our own set-up software that facilitates the installation procedures for end users and integrators. The wizard guides them through a step by step process that lets you define the input and output formats as well as the desired speaker layouts. This new wizard greatly simplifies the initial set-up procedure and calibration process.

ANALOG OUTPUTS

- 16 Balanced XLR

DIGITAL OUTPUTS

- 2 S/PDIF outputs (1 x optical / 1 x coax)

DIGITAL INPUTS

- 4 S/PDIF inputs (2 x optical / 2 x coax)

ANALOG INPUTS

- 1 stereo XLR / 1 stereo RCA
- 1 Trinnov Microphone Input

HDMI BOARD

- 2 Outputs: 1 HDMI 1.4 / 1 HDMI 2.0
- 7 Inputs 1-3 HDMI 1.4 / 4-7 HDMI 2.0
- Maximum Resolution 4K UHD
- Maximum Bandwidth 18Gbps

TRIGGERS

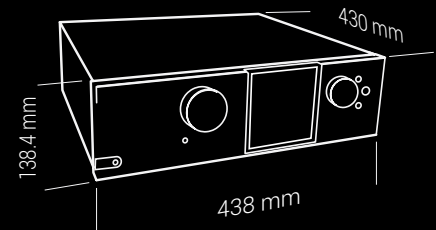
- 1 Input / 4 Outputs (Including 3 Programmable)

AUTOMATION PROTOCOL

- AMX, Control4, Crestron, RTI, Elan, Savant

SIZE / DIMENSIONS

(lxwxh)



Weight: 11.30Kg

ROON READY

roon



REVIEWS_

This processor has a sense of cohesion and transparency that simply amazed me. When you consider the processing and amplification involved, it was always going to sound good, even with the optimization turned off. But as soon as you turn it on, the sound field is transformed, the room itself disappears, and the audio displays a complete sense of realism.

Steve Withers - Home Cinema Choice Magazine (UK)

The Altitude¹⁶ is for those who want the very highest performance, and the very highest levels of adjustment to specific circumstances. Those after such heights won't be disappointed here.

Stephen Dawson - Sound+Image (Australia)

When it comes to 3D surround sound processor that offers the most advanced technology, the most brilliant dynamics, and delivers the most elaborated details; The Trinnov is indeed entitled to be the best among the competition!

Hifireview.com.hk (China)

The Professional approach of Trinnov with the Altitude¹⁶ allows for maximum sound quality at a fair price, while also letting the user tailor the final character of the system to its personal taste and needs.

Maxim Naumov - Stereo & Video (Russia)

It's quite simply the most sophisticated and flexible processor I've ever experienced. The Altitude¹⁶ is definitely worth every penny,

AVForums review (UK)

THE PERFECT COMPANION

AMPLITUDE^{8M}



HARNESSING POWER

A perfect companion to our brand new Altitude¹⁶ and made with the most demanding users in mind, our new 8 channel amplifier brings intelligent power and pristine audio quality at a competitive price point without any compromise in terms of design and build quality.

INTELLIGENT POWER

- Microprocessor control for turn-on delay
- Automatic AC Voltage recognition & configuration
- 200w/ch RMS @ 8Ω; 300w/ch RMS @ 4Ω
- Hypex N-Core NC-500 Class D amplifier modules

PRISTINE DYNAMIC RENDERING

- Intermodulation Distortion: Less than 0.03%.
- Signal to noise ratio: 123 dB referenced to rated output.
- Frequency Response +0/- 5 dB, 5 Hz to 20 kHz.



SIXTEEN CHANNELS OF HEAVEN_